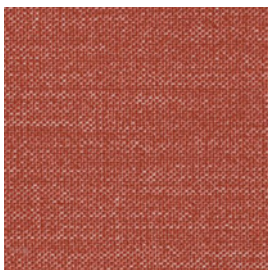


FAT / QUARTZ / IRON OXIDE SOILING ⁺

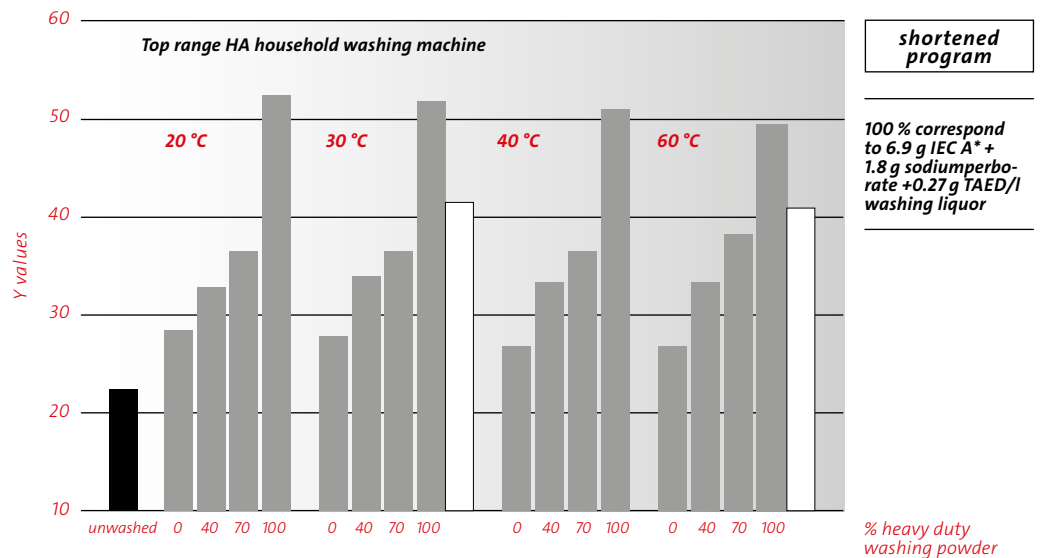
For Assessing the Efficiency of Detergents

This soiling consists of quartz, iron oxide and a selection of vegetable, animal and mineral fats. It is useable at all washing temperatures.

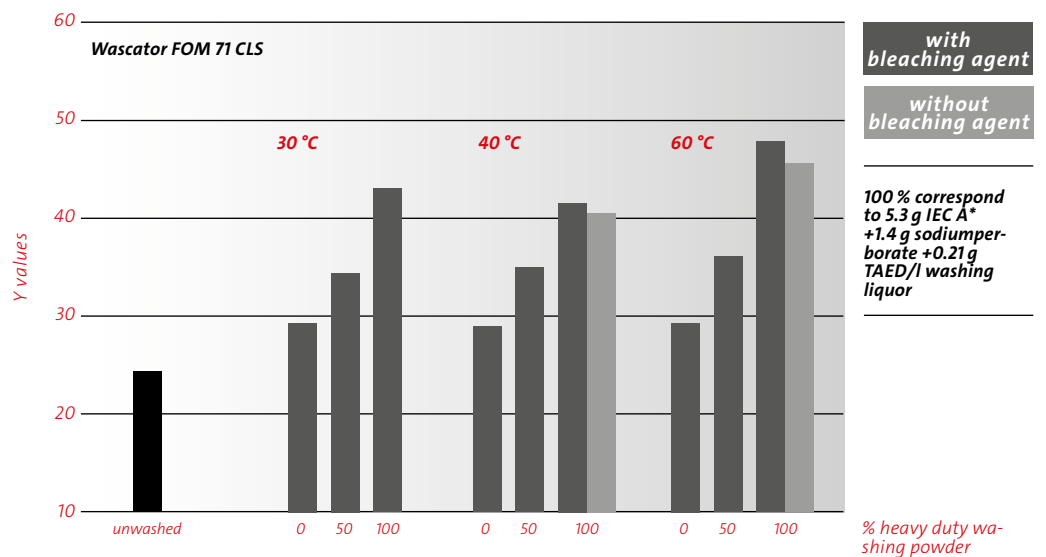
article 120
soiling on cotton



General washing behaviour



Additional influence of bleaching agent



Article 120 is sensitive to the amount of detergent and to the level of agitation. It is nearly insensitive to the temperature, to bleaching agents and to enzymes.